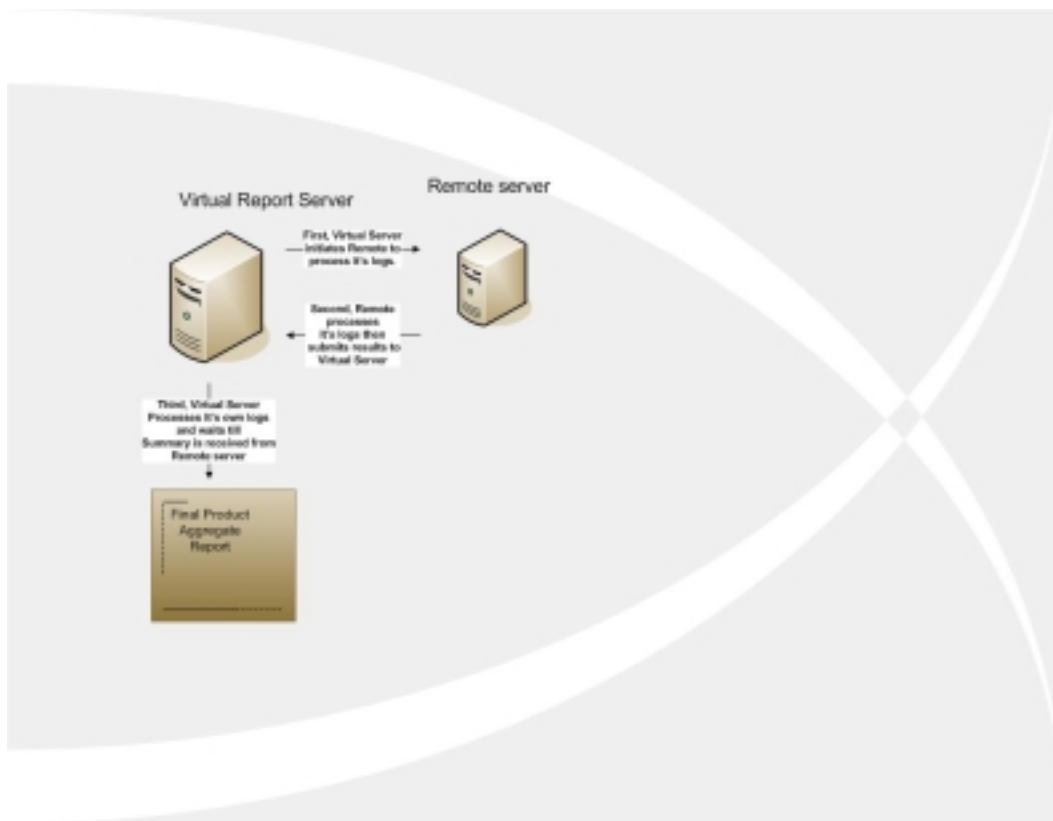


This document is a quick-start guide to Distributed Report Processing feature of bt-LogAnalyzer.

1. Overview

Distributed Report Processing feature allows bt-LogAnalyzer users to process reports on multiple machines and aggregate the processing into one report. This feature provides the following benefits.

- Multiple servers can run reports against their own logs. This distributes the time taken to run reports lowering Network Bandwidth.
- Reports can be run more frequently, again reducing the length of time required to produce final reports.
- Only the summary of the report is sent back by the Remote Server to the Virtual Report Server reducing Network Bandwidth.
- Distributed Report Processing feature provides a transparent (“Lan-like”) communications over Local Area Networks and Virtual Private Networks.



2) Terminology

(One) new key terms need to be explained to help understand the concept of the (Virtual Report Processing) Distributed Report Processing feature.

- Virtual Report Server: This is the server that will process the summary submitted by the Remote server into one report.

3) Setting up the Distributed Report Processing feature.

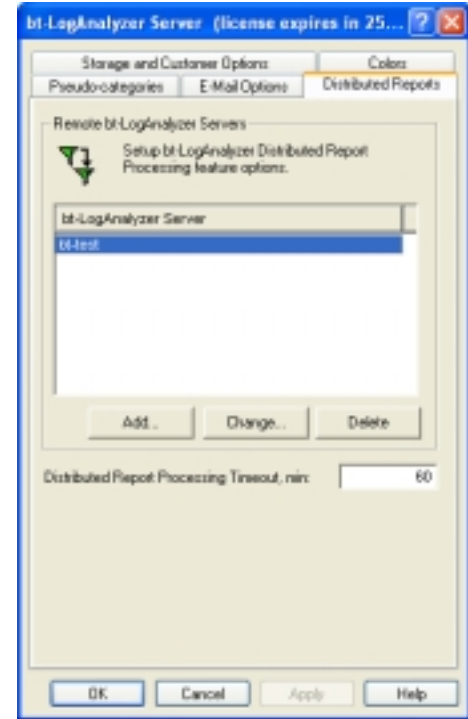
Prior to using the Distribute Report Processing feature, bt-LogAnalyzer needs to be installed on the Virtual Report Server and on all the Remote servers. If you have not done so, please refer to the Quick Start Guide to bt-LogAnalyzer Installation (attached to your download instructions). Each server will also need to have their Log Info Sources defined. Refer to the Quick Start Guide on how to configure Log Info Sources.

3.1) Virtual Report Server Setup

- Right-click on bt-LogAnalyzer and select 'Properties'
- Select the tab marked 'Distributed Reports'
- Select the button marked 'Add'
- Enter the name of your Remote servers where bt-LogAnalyzer is installed.

3.2) Distributed Report Processing Setup.

- Right-click on the report you would like to run and select 'Properties' from the menu.
- From the Properties dialog box, check the box marked 'Run this report at remote servers'.
- Click on 'Apply' then 'OK' to close the dialog box.
- Right-click on the report name and from the menu select 'Replicate Report Definition'.
- Note: Replication does not affect report's Log Info sources or Schedule options.



4) Generating a Distributed Report

There are 3 ways of Generating a Distributed Report

- Automated Distributed Processing with manual Generation start
- Automated Distributed Processing with Scheduled Generation start
- Manual Distributed Processing

4.1) Automated Distributed Processing with Manual Generation start

- This option allows you to use the Virtual Report Server to have the Remote Servers process their portion of the data.
- The Virtual Report Server will process it's own data if it has a log info source.

- The Remote Servers will submit their results to the Virtual Report Server.
- The Virtual Report Server will then combine the results into one report.

4.2) Automated Distributed Processing with Scheduled Generation start
This option is identical to 'Automated Distributed Processing with Manual Generation' with the exception that the report is initialized by the Virtual Report Server.

4.3) Manual Distributed Processing

- This option allows the Virtual Report Server and the Remote Servers to process their portions of their own logs at different times.
- It does not require a report to be setup for Distributed processing.
- Virtual Report Server does not connect to Remote Servers. Instead, Remote Server administrators have to process their portion of their log data. This can be done manually or by schedule and the results are uploaded to the Virtual Report Server.
- Remote Server Administrators have the option to email results to the Virtual Report Server or to export results to XML which can be submitted to the Virtual Report Server for further processing.
- Virtual Report Server Administrator is required to setup a log info source of the new type 'XML Report Results'.
- The new log info source is a folder located in the Results folder of bt-LogAnalyzer.
- Each Remote Server will have it's own folder.
- Once the report results are uploaded from all the Remote Servers, the Virtual Report Server can then process these results into a report either by manually generating or by a scheduled start.

Example 1: Automated Distributed Processing with Manual Generation Start.

In this example a report definition will be created on the Virtual Report Server and pushed onto the Remote server and manually generated. The Virtual Report Server will send a start command to the Remote Server. The Remote Server will process it's logs and submit the results to the Virtual Report Server which will then continue processing the results.

Step 1) Setting up a report for Remote execution.

- From the Virtual Report Server, right-click on 'Enterprise Summary' and select 'Properties'.
- Check the button marked 'Run this report at remote servers'.
- Click on 'Apply' then 'OK'

Step 2) Generate the report

- Right-click on 'Enterprise Summary' and select 'Generate'

- Click the node 'Report' to see the status of the report being generated. It will indicate 99% while it waits for the results from the Remote server.

Example 2: Running a daily scheduled Enterprise Summary report on the server and client.

Step 1) Create a new daily report based on the Enterprise Summary template.

- From the Virtual Report Server, right-click on the 'Enterprise' report and select 'Copy Report Definition'.
- Click 'Yes' when prompted.
- In the dialog box, enter the name 'Daily Report'
- At the bottom, check the box marked 'Run Report on Remote Server'
- Click on 'Apply' then 'OK'

Step 2) Customize the 'Daily Report' on the Virtual Report Server to run daily and push the report definition to the Remote server.

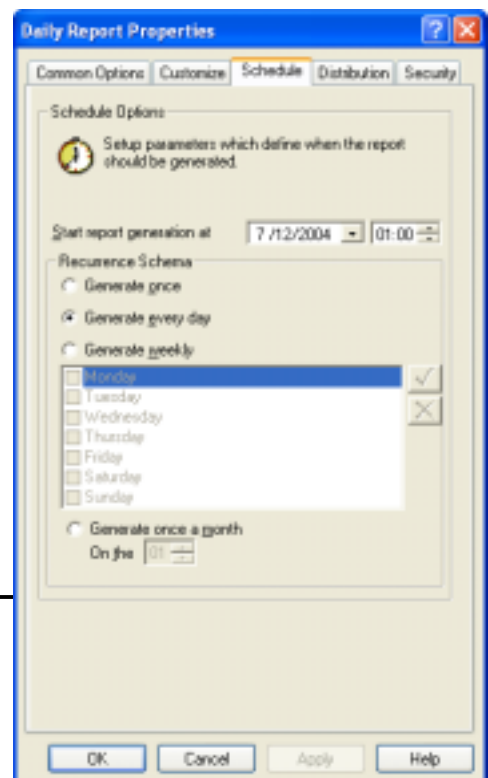
- Right-click on the report 'Daily Report' and select 'Properties'
- Check the options box marked 'Run the report on Remote Server'
- Click the tab marked 'Customize' and select the 'Date / Time' – Edit button.
- Select the radio button marked 'Prior Day'
- Click 'Apply' then 'OK' to close the properties dialog box.
- Right-click on the report 'Daily Report' and select 'Replicate Report Definition'

Step 3) Customize the Schedule options on the Virtual Report Server

- Right-click on 'Daily Report' and select 'Properties'
- Click the tab marked 'Schedule'
- Select the radio button marked 'Everyday'
- Set the 'Start report generation on' to Monday of the current week.
- Click on 'Apply' then 'OK'

Step 4) Customize the Schedule options on the Remote server







- On the Remote server, launch bt-LogAnalyzer
- Click to expand the Report node and locate the 'Daily Report' which was previously pushed onto this Remote server from the Virtual Report server.













- Right-click on the 'Daily Report' definition and select 'Properties'
- Click the tab marked 'Schedule'
- Select the radio button marked 'Everyday'
- Set the 'Start report generation on' to Monday of the current week.
- Click on 'Apply' then 'OK'

At this point, the reports should start to be generated on both servers. The Virtual Report server will wait for the daily results from the Remote server. Once the Remote server has submitted it's daily results, the Virtual Report server will then combine both results into one report.

The following snapshot of a report are the results generated by the Remote server.

Number of Web Pages per Category						
Type	Category Name	Web Pages	Percent	Users	Download Time	Viewing Time
	Computer/Internet	432	46%	6	26:54	1:48:00
	Search	154	16%	4	1:30	38:30
	Email	34	3%	1	3:38	8:30
	Government	28	3%	2	0:44	7:00
	General News	24	2%	1	0:15	6:00
	Business Services	18	1%	3	0:16	4:30

The Virtual Report server combined it's results and the Remote server's result producing the following report.

Number of Web Pages per Category							
Type	Category Name	Web Pages	Percent	Users	Download Time	Viewing Time	Kil
	Computer/Internet	488	43%	7	34:31	1:21:20	
	Search	157	13%	4	1:50	26:10	
	Counting	69	6%	2	8:35	11:30	
	Availity	62	5%	2	8:13	10:20	
	Email	34	3%	1	3:38	5:40	
	Government	28	2%	2	0:44	4:40	
	General News	24	2%	1	0:15	4:00	
	Business Services	18	1%	3	0:16	3:00	
	Financial	15	1%	2	0:20	2:30	
	Intranet	11	<1%	1	0:32	1:50	

Example 2) Taking the Daily report one step further. Using the previous example submissions to generate a Weekly results report.

Step 1) Defining the previously generated reports as a New Log Info Source.

- On the Virtual Report Server, right-click on 'Log Info Source' and select 'New' then 'Log Info Source'.
- Use the 'Browse' button and navigate to: C:\Program Files\Burst Technology\bt-Log Analyzer\server_name.yourdomain.com where 'server_name' is the name of the remote server with your domain appended to it.
- Click the 'Test' button, you should have a message of 'X Logs Found'.

Step 2) Customizing the 'Enterprise Summary' report to use the new log info source.

- On the Virtual Report server, right-click on 'Enterprise Summary' and select 'Copy report definition'
- Click on OK to use all the defaults.
- Give this report the name of 'Weekly Summary'
- Click the tab marked 'Customize'
- Click the 'Edit' button in the 'Related Log Info Source'.
- Select the radio button marked 'Selected Log Info Sources'
- Check the box of the Input source you just created.
- Click on 'Apply' then 'OK'
- Right-click on the report named 'Weekly Summary' and select 'Generate'