

LASE – How to install and configure the 'Remote Log Data Loader' component for ISA/TMG when logging to MSDE

1. Determine the Dynamic port being used for SQL Server on your LASE SQL Server:
 - a. Open the SQL Server Configuration Manager for the SQL Server that the LASE databases are installed on
 - b. Locate the 'TCP/IP' protocol for the instance that is used for the LASE databases and navigate to the properties by right-clicking and selecting 'Properties'
 - c. In the 'TCP/IP Properties' window, select the 'IP Addresses' tab
 - d. Record the 'TCP Dynamic Ports' value for the 'IPAll' section. (You can force SQL to use a different port by typing in the desired port number in the TCP Port field.)

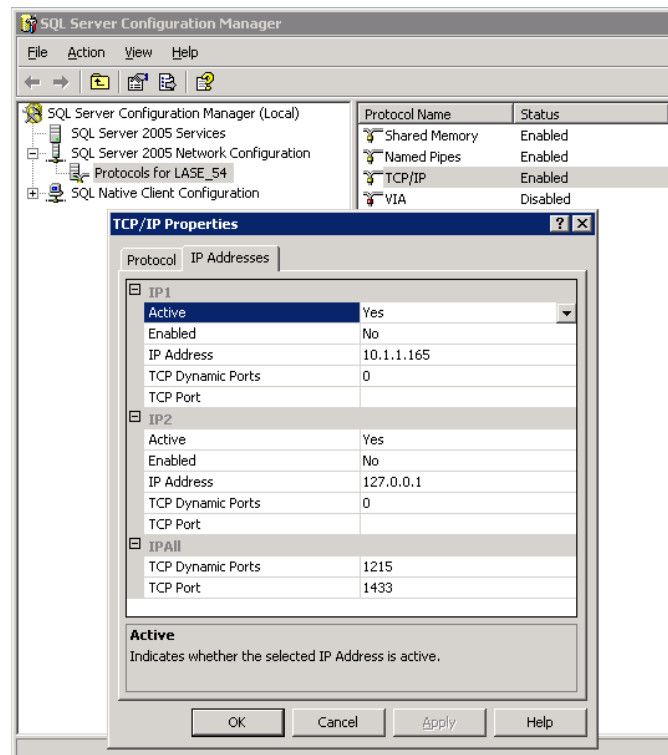


Figure 1 – SQL Server Configuration Manger TCP/IP Properties

NOTE: For more information on the SQL Server Instance dynamic ports, see:

- <http://msdn.microsoft.com/en-us/library/ms345327.aspx>
- http://msdn.microsoft.com/en-us/library/cc646023.aspx#BKMK_basic

2. **Create the necessary rules in ISA/TMG to allow communication between the related servers. The rules are listed below:**

IP Port	Protocol	Direction	Client Host	Destination Host	Users
1433	Microsoft SQL (TCP)	TCP/Outbound	ISA/TMG Server	SQL Server	All Users
1434	Microsoft SQL (UDP)	UDP/ Send Receive	ISA/TMG Server	SQL Server	All Users
(SQL Instance Dynamic port)	Custom/User-Defined	TCP/Outbound	ISA/TMG Server	SQL Server	All Users
8082	Custom/User-Defined	TCP/Outbound	ISA/TMG Server	LASE Main Server	All Users
8083	Custom/User-Defined	TCP/Outbound	ISA/TMG Server	LASE Main Server	All Users
8083	Custom/User-Defined	TCP/Outbound	LASE Main Server	ISA/TMG Server	All Users
8086	Custom/User-Defined	TCP/Outbound	LASE Main Server	ISA/TMG Server	All Users

Table 1 – Firewall Port Configuration

3. **Make sure the LogAnalyzer SE server’s local firewall does not block any communication on the previously-mentioned ports.**
4. **Install the Remote Data Loader on the ISA or TMG server with the MSDE or SQL Express proxy logs:**
 - a. Run the bt-LogAnalyzer SE ‘Setup.exe’ file
 - b. Click ‘Next’ to continue the installer
 - c. Read and accept EULA, then click ‘Next’
 - d. Read and accept third-party Components license agreement, then click ‘Next’
 - e. Accept and/or change the installation destination, then click ‘Next’
 - f. Select the ‘Remote Log Data Loader’ option and click ‘Next’
 - g. Type in the IP address or hostname of the server where the main installation of LogAnalyzer SE is located, then click ‘Next’
 - h. Enter the Service account that is used for the LA7* services on the LogAnalyzer SE server. Make sure this service account is a local administrator on the ISA/TMG server. **NOTE:** Input the service account in the ‘DOMAIN\username’ format. Click ‘Next’.
 - i. Click ‘Next’ to proceed with the installation
 - j. If the installation has succeeded successfully, click ‘Finish’

5. **Create and configure the Log Source for the remote MSDE/SQL Express log data:**
 - a. On the Main LogAnalyzer SE server, create a new log source
 - b. Select the 'MSDE Database' option for the 'Log Source Type'
 - c. Navigate to the 'Advanced' tab of the new log source properties window
 - d. Mark the check box labeled 'Use remote server for this Log Source'
 - e. Type in the IP address or hostname of the remote ISA/TMG server where the proxy logs reside, then click 'Apply'
 - f. Navigate back to the 'Common Options' tab in the new log source properties window, then click the 'Test' button located in the lower portion of the page
 - g. You should receive a 'Test succeeded. Log source is not empty.' Message. If the test fails, make sure the LogAnalyzer SE Main server's local firewall is not blocking communication. If you have confirmed that this is not the cause of the test failure, configure the ISA/TMG server to monitor all traffic between all 3 servers (LogAnalyzer SE Main, ISA/TMG Server, SQL Server)
 - h. Once the test has succeeded, click 'OK'

6. **Load and categorize your new log source.**

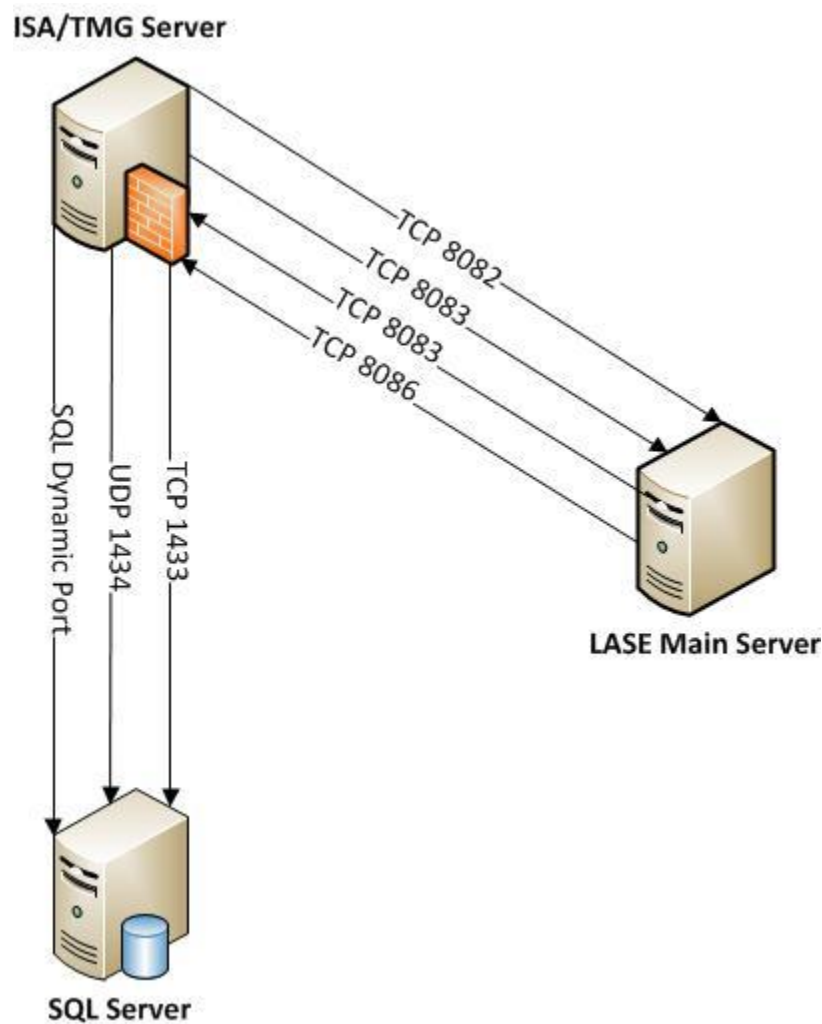


Figure 2 – Port Flow between LASE, RDL, and SQL